



ELECTRIC CHARACTERISTICS

Nominal Voltage	0/480 V _{Ac} - 50/60 Hz
Phase to phase test voltage	2200 V _{Dc} (2 s)
Phase to ground test voltage	2900 V _{Dc} (2 s)
Climatic class	- 40 / +85 °C



FIN1351	Rate Current (A) 40°C (50°C)	Σ Cx (nF) ± 5%	Cy (nF) ± 5%	L1 (mH) ± 10%	Pow Loss (W)
.006.M	6	450	22	0.5	6
.010.M	10	450	22	0.5	8
.016.M	16	450	22	0.5	10

Total leakage current at 230 V phase to ground 50 Hz / 40°C
 Nominal <3mA
 Worst condition <5mA

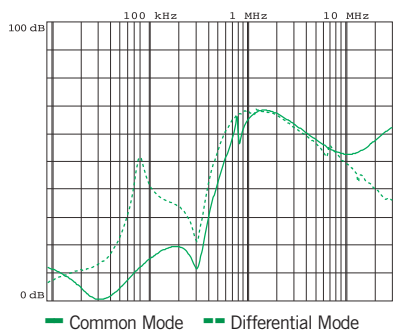
MECHANICAL DIMENSIONS (mm)

FIN1351	A	B	H	N	Weight Kg	Case
.006.M	65	85	39	11	0.320	1
.010.M	65	85	39	11	0.320	1
.016.M	65	85	39	11	0.320	1

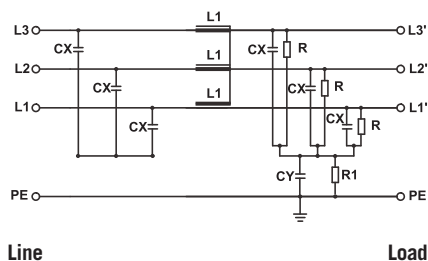
CONNECTION

Rigid Cable (mm ²)	Flexible Cable (mm ²)	Torque (Nm)
0.2 - 6	0.2 - 4	0.8
0.2 - 6	0.2 - 4	0.8
0.2 - 6	0.2 - 4	0.8

TYPICAL ATTENUATION



ELECTRIC DIAGRAM



CASE 1

